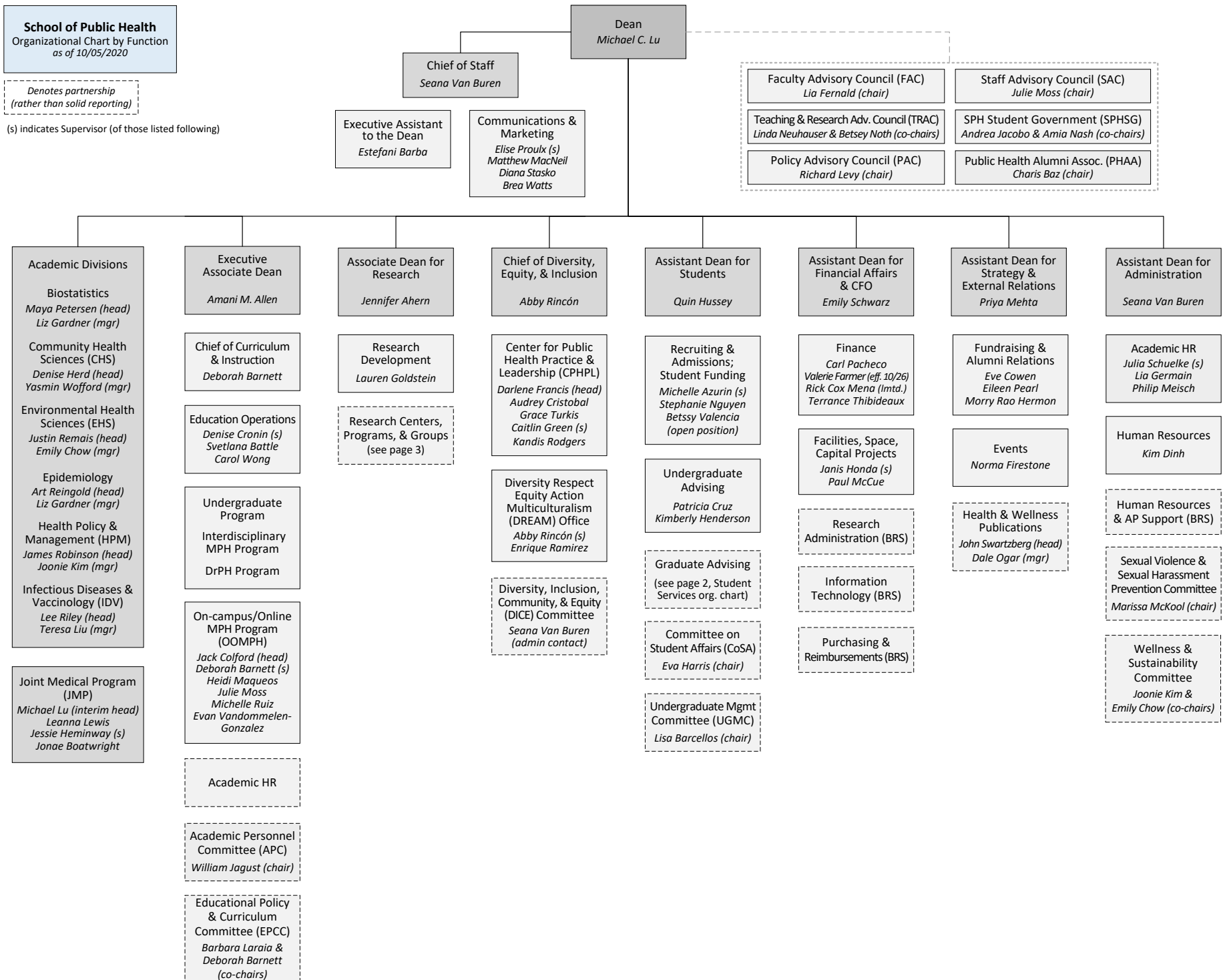


School of Public Health
Organizational Chart by Function
as of 10/05/2020

Denotes partnership
(rather than solid reporting)

(s) indicates Supervisor (of those listed following)



SPH Student Services
Organizational Chart
as of 10/05/2020

Michael C. Lu
Dean
School of Public Health

Divisional Leadership

Abby Rincón
Chief of Diversity, Equity,
and Inclusion

Quin Hussey
Assistant Dean
for Students

Academic Program Management & Graduate Advising

Biostatistics & Epidemiology
Lauren Krupa
Sumaiya Elahi

Community Health Sciences
Hannah Mack (interim)
Health & Social Behavior
Heidi Kelly-Tuason
Maternal, Child & Adolescent Health
Carol Hui
Public Health Nutrition

Environmental Health Sciences
Gladys Stout
Liza Lutzker

Health Policy & Management
Kristine Doss

Infectious Diseases & Vaccinology
Teresa Liu

Joint Medical Program
Jonae Boatwright

On-campus/Online MPH Program
Judy Smithson

Doctor of Public Health Program
Judy Smithson

Interdisciplinary MPH Program
Judy Smithson

Diversity Respect Equity Action Multiculturalism (DREAM) Office

Abby Rincón
Director

Enrique Ramirez
Diversity Outreach
Coordinator

Center for Public Health Practice & Leadership (CPHPL)

Darlene Francis
Faculty Director

Audrey Cristobal
Director of Field Education

Grace Turkis
Director of Leadership & Professional Development

Caitlin Green
Director of Career Services

Kandis Rodgers
Career Services Specialist

Admissions & Recruitment

Michelle Azurin
Associate Director

Stephanie Nguyen
Online Education
Recruitment Specialist

Betsy Valencia
Student Funding & Admissions Coordinator

(open)
Admissions & Recruitment
Coordinator

Undergraduate Program & Advising

Patricia Cruz
Undergraduate
Academic Advisor

Kimberly Henderson
Undergraduate
Academic Advisor

SPH Research Centers, Programs, and Groups	Faculty Head/PI	Administrative Manager
Alcohol Research Group (ARG)	<i>Sarah Zemore</i>	<i>Vicky Fagan</i>
Arsenic Health Effects Research Group	<i>Craig Steinmaus</i>	<i>n/a</i>
Berkeley Center for Health Technology (BCHT)	<i>James Robinson</i>	<i>Eve Donovan</i>
Bixby Center for Population, Health, and Sustainability	<i>Ndola Prata</i>	<i>Karen Weidert; Siti Juwariyah</i>
California Initiative for Health Equity & Action (Cal-IHEA)	<i>Hector Rodriguez</i>	<i>n/a</i>
Center for Environmental Research and Children's Health (CERCH)	<i>Brenda Eskenazi</i>	<i>Donna Dahrouge</i>
Center for Global Public Health (CGPH)	<i>Eva Harris</i>	<i>Hildy Fong</i>
Center for Health Care Organizational and Innovation Research (CHOIR)	<i>Stephen Shortell & Hector Rodriguez</i>	<i>Salma Bibi</i>
Center for Lean Engagement and Research in Healthcare (CLEAR)	<i>Stephen Shortell & Thomas Rundall</i>	<i>Janet Blodgett</i>
Center of Excellence in Maternal, Child, and Adolescent Health	<i>Julianna Deardorff</i>	<i>Heidi Kelly-Tuason</i>
Center for Occupational & Environmental Health (COEH)	<i>John Balmes</i>	<i>Gina Grayson</i>
Colford-Hubbard Research Group	<i>Jack Colford & Alan Hubbard</i>	<i>Lucas Carlton</i>
Fogarty International Center Global Infectious Disease Program	<i>Lee Riley</i>	<i>Maria Hernandez</i>
Forum for Collaborative Research	<i>Veronica Miller</i>	<i>Astrud Reed</i>
Health Initiative of the Americas (HIA)	<i>Liliana Osorio</i>	<i>Caroline Dickinson</i>
Health Research for Action (HRA)	<i>Linda Neuhauser & Len Syme</i>	<i>Diana Darab</i>
Innovations for Youth (I4Y)	<i>Coco Auwerswald, Emily Ozer & Ndola Prata</i>	<i>Marieka Schotland; Siti Juwariyah</i>
Integrative Cancer Research Group (ICARE)	<i>Catherine Metayer</i>	<i>Alice Kang</i>
California Childhood Leukemia Study (CCLS)		
Center for Integrative Research on Childhood Leukemia and the Environment (CIRCLE)		
Childhood Leukemia International Consortium (CLIC)		
Labor Occupational Health Program (LOHP)	<i>Laura Stock</i>	<i>Yanni Zhang</i>
OASIS Initiative	<i>Malcolm Potts & Dan Perlman</i>	<i>Paige Passano</i>
National Growth and Health Study Research Center	<i>Barbara Laraia</i>	<i>n/a</i>
Petris Center on Health Care Markets & Consumer Welfare (Petris Center)	<i>Richard Scheffler</i>	<i>Brent Fulton</i>
Right Care Initiative	<i>Stephen Shortell</i>	<i>Hattie Hanley</i>
Safe Transportation Research and Education Center (SafeTREC)	<i>David Ragland</i>	<i>Jill Cooper; Nancy Leon</i>
UC Berkeley Superfund Research Program	<i>Martyn Smith</i>	<i>Cliona Mchale</i>
Wallace Center for Maternal and Child Health	<i>Kim Harley</i>	<i>Siti Juwariyah</i>