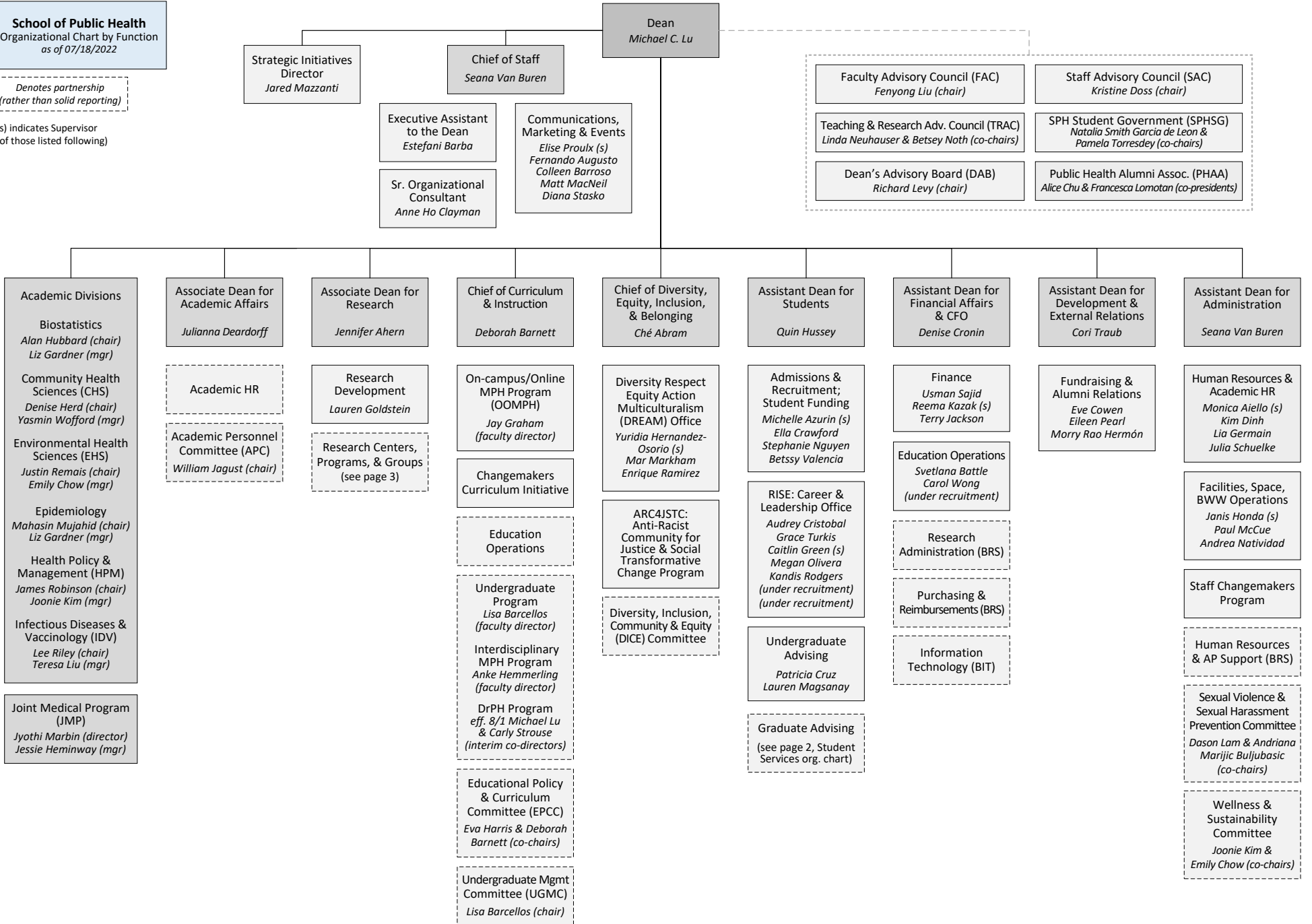


School of Public Health
Organizational Chart by Function
as of 07/18/2022

Denotes partnership
(rather than solid reporting)

(s) indicates Supervisor
(of those listed following)



SPH Student Services
Organizational Chart
as of 07/18/2022

Michael C. Lu
Dean
School of Public Health

Divisional Leadership

Ché Abram
Chief of Diversity, Equity,
Inclusion & Belonging

Quin Hussey
Assistant Dean
for Students

**Academic Program Management
& Graduate Advising**

Biostatistics & Epidemiology
Lauren Krupa
Sumaiya Elahi

Community Health Sciences
Jessica Ko
Health & Social Behavior
Jessica Ross
Maternal, Child & Adolescent Health
Carol Hui
Public Health Nutrition

Environmental Health Sciences
Gladys Stout
Liza Lutzker

Health Policy & Management
Kristine Doss

Infectious Diseases & Vaccinology
Teresa Liu

Joint Medical Program
Deanine Johnson

On-campus/Online MPH Program
Judy Smithson
Lucas Carlton
Kristine Doss
Heidi Maqueos

Doctor of Public Health Program
Chidera Ofoha

Interdisciplinary MPH Program
Chidera Ofoha

**Diversity Respect Equity
Action Multiculturalism
(DREAM) Office**

Yuridia Hernandez-Osorio
Director
Mar Markham
Enrique Ramirez
Diversity, Equity, Inclusion
& Belonging Specialists

Admissions & Recruitment

Michelle Azurin
Director
Ella Crawford
Admissions & Recruitment
Manager
Stephanie Nguyen
Online Education
Recruitment Manager
Betssy Valencia
Student Funding &
Admissions Manager

**Undergraduate Program
& Advising**

Patricia Cruz
Undergraduate
Academic Advisor
Lauren Magsanay
Undergraduate
Academic Advisor

**RISE: Career &
Leadership Office**

Audrey Cristobal
Director of Field Education
Grace Turkis
Director of Leadership &
Professional Development
Caitlin Green
Director of Career Services
Kandis Rodgers
Career Services Specialist
Megan Olivera
Health Education
Coordinator

SPH Research Centers, Programs, and Groups	Faculty Head/PI	Administrative Manager
Alcohol Research Group (ARG)	<i>William Kerr</i>	<i>Adrienne Faxio</i>
Arsenic Health Effects Research Group	<i>Craig Steinmaus</i>	<i>n/a</i>
Berkeley Center for Health Technology (BCHT)	<i>James Robinson</i>	<i>Yanni Zhang</i>
Bixby Center for Population, Health, and Sustainability	<i>Ndola Prata</i>	<i>Karen Weidert; Siti Juwariyah</i>
California Initiative for Health Equity & Action (Cal-IHEA)	<i>Hector Rodriguez</i>	<i>Salma Bibi</i>
Center for Environmental Research and Children's Health (CERCH)	<i>Brenda Eskenazi</i>	<i>Donna Dahrouge</i>
Center for Global Public Health (CGPH)	<i>Eva Harris</i>	<i>Hildy Fong</i>
Center for Health Care Organizational and Innovation Research (CHOIR)	<i>Hector Rodriguez</i>	<i>Salma Bibi</i>
Center for Lean Engagement and Research in Healthcare (CLEAR)	<i>Dorothy Hung</i>	<i>Salma Bibi</i>
Center for Targeted Machine Learning & Causal Inference	<i>Maya Petersen & Mark van der Laan</i>	<i>Christina Da Silva</i>
Center of Excellence in Maternal, Child, and Adolescent Health	<i>Julianna Deardorff</i>	<i>Jessica Ross</i>
Center for Occupational & Environmental Health (COEH)	<i>Carisa Harris-Adamson</i>	<i>Gina Grayson</i>
Fogarty International Center Global Infectious Disease Program	<i>Lee Riley</i>	<i>Maria Hernandez</i>
Forum for Collaborative Research	<i>Veronica Miller</i>	<i>Brenda Rodriguez</i>
Health Initiative of the Americas (HIA)	<i>Xochitl Castaneda</i>	<i>n/a</i>
Health Research for Action (HRA)	<i>Linda Neuhauser</i>	<i>Carl Pacheco</i>
Innovations for Youth (i4Y)	<i>Coco Auwerswald, Emily Ozer & Ndola Prata</i>	<i>Marieka Schotland; Siti Juwariyah</i>
Integrative Cancer Research Group (ICARE)	<i>Catherine Metayer</i>	<i>Alice Kang</i>
California Childhood Leukemia Study (CCLS)		
Center for Integrative Research on Childhood Leukemia and the Environment (CIRCLE)		
Childhood Leukemia International Consortium (CLIC)		
Labor Occupational Health Program (LOHP)	<i>Laura Stock</i>	<i>Yanni Zhang</i>
OASIS Initiative	<i>Malcolm Potts & Dan Perlman</i>	<i>Paige Passano</i>
Petris Center on Health Care Markets & Consumer Welfare (Petris Center)	<i>Richard Scheffler</i>	<i>Brent Fulton</i>
Right Care Initiative	<i>Hector Rodriguez</i>	<i>Hattie Hanley</i>
Safe Transportation Research and Education Center (SafeTREC)	<i>David Ragland</i>	<i>Jill Cooper; Nancy Leon</i>
UC Berkeley Superfund Research Program	<i>Martyn Smith</i>	<i>Cliona Mchale</i>
Wallace Center for Maternal and Child Health	<i>Kim Harley</i>	<i>Siti Juwariyah</i>