

Health Policy & Management MPH

Applicant Handbook

2023

[#MindsWanted](#)

At the UC Berkeley School of Public Health, we're on the hunt for certain kinds of minds. Unrestrained and unconventional minds, curious minds. Minds self-directed enough to thrive in our unique campus culture. Undergrad, masters, and doctoral minds with an open-source spirit. Minds always exploring, seeing the radical collaborations needed to master the complex public health problems we face in California and the world.





We are pleased that you are exploring graduate studies at the University of California, Berkeley School of Public Health! We hope this student handbook is a useful resource and look forward to connecting with you along your health policy & management journey.

Table of Contents

Who We Are	4
Why Berkeley School of Public Health?	4
Where do HPM Grads Go?	6
Professional Development	8
Overview of the HPM Offerings	9
Core HPM Classes	11
2 Year MPH in HPM	12
11 Month MPH in HPM	14
Online MPH (OOMPH)	16
MBA/MPH	18
MPP/MPH	19
Financing Your Degree	21
HPM Application FAQs	23
Appendix A. HPM Faculty Profiles	26
Appendix B. MPH Student Profiles 2022 - 2023	33
Appendix C. Selected Practicum Placement Sites	43

Who We Are

Why Berkeley School of Public Health?

OUR LOCAL PRESENCE adjacent to Silicon Valley and national centers of innovation puts us at the epicenter of advances in biotechnology, digital health, and big data. The Bay Area is also at the forefront of innovations in integrated health delivery, healthy communities, and health policies or health coverage.

OUR GEOGRAPHY in the largest, fastest growing, and most diverse state in the United States, on the Pacific Rim, and sharing border with Mexico (with whom we share many demographic and epidemiological characteristics) provides strong platform from which to straighten out work locally and globally, and from which to expand to include the economic powerhouses across Pacific.

OUR BROADER BERKELEY CAMPUS AND THE UC SYSTEM allow access to leading-edge collaborators in key disciplines including engineering, computer science, social sciences, public policy, journalism, international development, business law, and beyond. As part of the UC System we have access to unequalled capacity and networks: specifically our close partnerships with UCSF joins us with a world-class medical campus.

MORE THAN 70 YEARS as one of the nation's preeminent academic institutions in the field of public health, on a campus with a legacy and commitment to social justice, provides a unique position to lead change. We are highly regarded for the quality of our faculty and students and have a reputation for excellence in education, research, and community engagement. Our graduates are transformational health leaders across all health sectors, with a legacy of impact and innovation locally, nationally, and globally.

Why Health Policy and Management?

Be inspired by brilliant faculty and exceptional peers to improve health and health care.

Health care is a vibrant, fast-paced field that's continually evolving. As a graduate student at Berkeley, you'll gain the knowledge, skills, and partners you need to become a high-impact contributor at a health care employer of your choice. HPM at Berkeley offers experiences in and out of the classroom that challenge convention and help you grow as a healthcare leader.

You have had exposure to the challenges and opportunities that exist and are ready to further invest yourself so that you can be a meaningful part of a change process.

You are already called to make a difference in HPM. You are passionate about innovation and improving health and health care. You seek an interdisciplinary community of students, faculty and alumni who will engage and support you.

For more detail on who might be your peers, see the bios of current HPM students in the [Appendix B](#).

What you will learn at Berkeley HPM

We offer a range of master's programs that allow you to align your graduate studies in Health Policy and Management with how you want to contribute to the professional field. During your time at Berkeley, you will:

Complete course courses in health policy, economics, finance, management, and strategy.

Experience HPM in action through both a field placement and by developing and executing a Capstone project - typically a strategic initiative/business plan or a policy analysis/evaluation, often in partnership with a client organization.

Engage with employers, alumni and industry experts to see health policy and management from the lens of those on the front lines and in the executive suite.

Take electives with HPM across the other core areas of public health, and/or choose to follow your passion by exploring offerings from your partner schools and programs across the Berkeley campus: Haas School of Business, Goldman School of Public Policy, School of information, Berkeley Law, Social Welfare, City and Regional Planning and many more.

Where do HPM Grads Go?



For more detail, see the rosters of our HPM internship placements in the [Appendix C](#).

On-campus partnerships.

Some of our key HPM collaborators are other UC Berkeley schools and programs. We share concurrent degree programs, as well as conduct joint research and promote health-care-related classes and experiences.



Meet the faculty team.

You'll learn from **a preeminent faculty team** dedicated to giving you access to both research-focused experts and professional faculty who offer exposure to applied HPM concepts. Together they team to help you develop your own HPM expertise and leadership skills, provide you with critical knowledge in the key disciplines, advise you about how to engage for success with different stakeholders, and offer you their connections to alumni, academic, and professional communities. Here we highlight just a few of them and the impact they are having both locally and globally. **For more detail, see the profiles of HPM faculty in the [Appendix A](#).**

Affordability & Innovation/Health Economics



James Robinson, PhD, MPH is a senior member of the HPM faculty and the current division chair. He holds the Leonard Schaeffer Chair in Health Economics and is the director of the Berkeley Center for Health Technology. He teaches health economics and biomedical innovation policy and focuses his research on coverage and adoption for biotech and medical devices, pricing, and consumer-driven health care. Current projects on drug pricing are funded by the Arnold Foundation and the Commonwealth Fund. Dr. Robinson served as editor-in-chief of Health Affairs in 2007-2008 and in March 2015 published a well-received book, *Purchasing Medical*

Innovation, on the dynamics between health systems and medical device manufacturers in the United States.

Healthcare Organizations



Amanda Brewster, PhD, MSc, Amanda L. Brewster is an Assistant Professor of Health Policy and Management at the School of Public Health, University of California, Berkeley. Her research examines how management and inter-organizational relationships influence the performance of health care organizations. Her recent work focuses on identifying effective strategies for health care and social services to work together to address both medical and social determinants of health, including studies of cross-sector collaboration at the community level, partnerships between Area Agencies on Aging and health care organizations, and screening for social determinants of health in physician practices. Her work employs a range of methods, including qualitative and mixed-methods, organizational network analysis, and longitudinal analyses leveraging large survey-based and claims-based datasets. In addition to her research on relationships between health care and social services organizations, Dr. Brewster also studies quality improvement and organizational learning in health care organizations.

Patient-Centered Outcomes of Care



Hector Rodriguez, PhD, MPH, professor in Health Policy & Management and chair of the Health Policy PhD program, is also a co-investigator for a Patient-Centered Outcomes Research Institute (PCORI)-funded project on The Comparative Impact of Patient Activation and Engagement on Improving Patient-Centered Outcomes of Care in Accountable Care Organizations. He is also associate director of the Center for Healthcare Organizational Innovation and Research (CHOIR). He has served as a management consultant to The Permanente Medical Group, where he worked with leaders and clinicians to implement major primary care practice redesigns and

evaluate their impact on patient care.

Professional Development

You'll benefit from our innovative approach to professional development—such as the strong presence in the HPM curriculum for **case-based and service-based learning experiences, networking opportunities, and career management services**— all to ensure you stay connected to UC Berkeley, to each other, and to the outside world.

Healthcare industry partnerships: We

have relationships with a **rich landscape of healthcare employers** in the Bay Area, including Kaiser Permanente, San Francisco General Hospital, Deloitte Consulting, Castlight Health, Genentech, and many others.



Local health care organizations offer students engaging capstone projects:

Graduating HPM students have partnered with the following organizations to complete their HPM MPH Comprehensive Exam/Capstone Projects: Blue Shield of California, Gigler.io, San Francisco General Hospital, OLE Health, Brown, Toland Physicians, Alameda HealthCare Partners, and UCSF Medical Center.



Overview of the HPM Offerings

We offer a range of master's programs to allow you to align your graduate studies in health policy and management with how you want to contribute to the professional field:

- 2 Year MPH in HPM
- 11 Month MPH in HPM
- OOMPH (Online MPH) in HPM
- MBA/MPH – Concurrent degree program with [the Haas School of Business](#)
- MPP/MPH - Concurrent degree program with [the Goldman School of Public Policy](#)

Please see detail on each of the core master's tracks below and check out profiles of students in each track in [Appendix B](#).

MPH Foundational Competencies

Evidence-based Approaches to Public Health

1. Apply epidemiological methods to settings and situations in public health practice
2. Select quantitative and qualitative data collection methods appropriate for a given public health context
3. Analyze quantitative and qualitative data using biostatistics, informatics, computer-based programming and software, as appropriate
4. Interpret results of data analysis for public health research, policy or practice

Public Health & Health Care Systems

5. Compare the organization, structure and function of health care, public health and regulatory systems across national and international settings
6. Discuss the means by which structural bias, social inequities and racism undermine health and create challenges to achieving health equity at organizational, community and systemic levels

Planning & Management to Promote Health

7. Assess population needs, assets and capacities that affect communities' health
8. Apply awareness of cultural values and practices to the design, implementation or critique of public health policies or programs
9. Design a population-based policy, program, project or intervention
10. Explain basic principles and tools of budget and resource management
11. Select methods to evaluate public health programs

Policy in Public Health

12. Discuss the policy-making process (2), including the roles of ethics and evidence
13. Propose strategies to identify stakeholders and build coalitions and partnerships for influencing public health outcomes
14. Advocate for political, social or economic policies and programs that will improve health in diverse populations
15. Evaluate policies for their impact on public health and health equity

Leadership

16. Apply leadership and/or management principles to address a relevant issue
17. Apply negotiation and mediation skills to address organizational or community challenges

Communication

18. Select communication strategies for different audiences and sectors
19. Communicate audience-appropriate (i.e., non-academic, non-peer audience) public health content, both in writing and through oral presentation
20. Describe the importance of cultural competence in communicating public health content

Interprofessional Practice

21. Integrate perspectives from other sectors and/or professions to promote and advance population health

Systems Thinking

22. Apply systems thinking tools to a public health issue to visually represent a public health issue in a format other than standard narrative

HPM Foundational Competencies

Management

1. Apply skills in collaboration, coaching and influencing to achieve organizational, policy or strategic initiative goals
2. Evaluate and select options for effective diffusion of innovation within a healthcare organization
3. Utilize an inclusive approach to management decision making

Finance

1. Utilize an inclusive approach to management decision making
2. Analyze financial statements, cost and managerial information to assess and promote the financial health of a unit, organization, or system

3. Apply analytic tools and techniques to make sound short and long-term investment decisions within a health care environment

Policy in Public Health

1. Examine dynamics in the design, adoption, and implementation of health policies
2. Analyze policies for their impact on health and health equity
3. Understand how to use advocacy tools to change health policy

Economics

1. Utilize economic theory to assess the efficiency and equity of current and proposed health policies
2. Analyze the role of incentives in shaping behaviors of health sector stakeholders

Core HPM Classes

We believe that a foundation in both policy and management is necessary to effect meaningful change, but if you want to specialize in one or the other of these areas, we support that through academic advising about electives, our concurrent degree options, and through robust professional advising for internships and career positions.

The HPM core curriculum includes classes such as:

- Foundations of HPM/Healthcare in the 21st Century
- Strategic Management and the Health Sector
- Organizational Behavior and Management in Health Care
- Health Care Finance
- Health Policy
- Health Economics
- Health Care Quality
- Analytic Methods for HPM

2 Year MPH in HPM

The two-year MPH HPM program curriculum is based on our faculty's philosophy that a strong working knowledge of both management and policy are necessary to be an effective health care leader. We also highly emphasize professional development via the full-time summer internship and other vehicles to hone key leadership and emotional intelligence skills and engage with the community.

Our two-year program offers frequent opportunities to engage in applied learning activities to gain core skills such as financial analysis, policy decision-making, and environmental scan, as well as to engage in both leadership and team-based approaches to problem-solving and innovation. **Electives can be from HPM, other areas of BPH or elsewhere on the Berkeley campus (Haas, LAW, GSPP, etc)**

UNIT REQUIREMENTS

Two-Year MPH students are required to complete a minimum of **48 units of coursework over four academic semesters and one summer**. The minimum unit enrollment per academic semester is 12 units.

SCHOOL-WIDE MPH REQUIREMENTS (14 UNITS)

PH 142	Introduction to Probability and Statistics in Biology and Public Health
PH 200K	Environmental Health Sciences Breadth Course
PH 200L	Health and Social Behavior Breadth Course
PH 250A	Epidemiologic Methods I
PH 297	Public Health Field Placement

HPM PROGRAM REQUIRED COURSES (20 UNITS)

Health Policy (options include)

PH 220	Health Policy Decision-Making
PH 220D	Health Policy Advocacy
PH 220E	Global Health Policy
PH W220M	Health Policy Methods (online course)
PH 271E	Science and Policy for Environment and Health
PH 222A	Biomedical Innovation Policy (also available as an online course PHW222A)

Management and Organization: One of the two following courses (CEPH Leadership)

PH 223C	Strategic Management and the Health Sector
PH 224A	Organizational Behavior and Management in Health Care

Microeconomics of Health Care: One of the two following courses

PH 226A	Health Economics (also available as an online course PHW226A)
PH 226C	Economics of Population Health (also available as an online course PHW226C)

Statistical Methods

PH 231A Analytic Methods for Health Policy and Management

Professional Development

PH 223D Foundations of Health Policy and Management

Health Finance

PH W227A Health Care Finance

Capstone

PH 223E Capstone Seminar in Health Policy and Management

Sample 2-year MPH Schedule

	Fall	Spring	Summer
First Year	PH142 Biostatistics PH200L HSB Breadth PH223D Foundations of HPM PH224A Org Behavior & Mgmt or Elective PH250A Epidemiology	PH200K EHS Breadth PH231A Analytic Methods PHW227A Healthcare Finance Electives(s)	Practicum between 1st-year spring & 2nd-year fall
Second Year	PH226A Health Economics PH297 Summer Practicum Units PH220 HP Decision Making Elective(s)	PH222A Biomedical Innovation PH223C Strategy PH223E HPM Capstone Electives	

11 Month MPH in HPM

This accelerated MPH track is an intensive, rigorous experience, designed to give future clinical leaders a solid background in the key health policy and management competencies, as well as exposure to a wide range of skills and knowledge areas that will complement their clinical training. While there is no full-time summer internship component, students must select an organization and complete **a research or project-based practicum**. Electives can be from HPM, other areas of BPH or elsewhere on the Berkeley campus (Haas, LAW, GSPP, etc.)

UNIT REQUIREMENTS

11 Month MPH students are required to complete a minimum of **42 units of coursework over two academic semesters and one 6-week summer session** (prior to the fall start). The program typically runs from early July to early May. The minimum unit enrollment per academic semester is 12 units.

SCHOOL-WIDE MPH REQUIREMENTS (11 UNITS)

PH 142	Introduction to Probability and Statistics in Biology and Public Health
PH 200K	Environmental Health Sciences Breadth Course
PH 200L	Health and Social Behavior Breadth Course
PH 250A	Epidemiologic Methods I

HPM PROGRAM REQUIRED COURSES (20-24 UNITS)

Health Policy

PH 220	Health Policy Decision-Making
PH 220D	Health Policy Advocacy
PH 220E	Global Health Policy
PHW 220M	Health Policy Methods (online course)
PH 271E	Science and Policy for Environment and Health
PH 222A	Biomedical Innovation Policy (also available as an online course PHW222A)

Management and Organization: One of the two following courses (CEPH Leadership)

PH 223C	Strategic Management and the Health Sector
PH 224A	Organizational Behavior and Management in Health Care

Microeconomics of Health Care: One of the two following courses

PH 226A	Health Economics (also available as an online course PHW226A)
PH 226C	Economics of Population Health (also available as an online course PHW226C)

Statistical Methods

PH 231A	Analytic Methods for Health Policy and Management
---------	---

Professional Development

PH 223D Foundations of Health Policy and Management

PH 299 HPM Practicum (required field work for 11 Month students only)

Health Finance

PH W227A Health Care Finance

Capstone

PH 223E Capstone Seminar in Health Policy and Management

Sample 11-month MPH Schedule

	Summer (July start)	Fall	Spring
11-month	PH142 Biostatistics PH250A Epidemiology	PH200L HSB Breadth PH223D Foundations of HPM PH224A Org Behavior & Mgmt PH226A Health Economics PH220 HP Decision Making Elective(s)	PH200K EHS Breadth PH223C Strategy PH231A Analytic Methods PHW227A Healthcare Finance PH223E HPM Capstone PH299 Practicum Electives(s)

Online MPH (OOMPH) in HPM

For applicants who cannot participate in the residential MPH in HPM, we have an Online MPH Health Policy & Management concentration. Students will enjoy experiences in and out of the classroom that challenges convention and help you grow as a healthcare leader. Our faculty - who bring their expertise in economics, policy, organization behavior, finance, and strategy - are the same as those teaching in the residential programs.

Applicants to the OOMPH program can select the Health Policy and Management concentration or take HPM classes as part of other concentrations. The curriculum is designed for a variety of professionals - from clinicians to managers to policy leaders - across a range of healthcare areas, such as healthcare systems/medical groups, pharmaceuticals, medical devices and health insurers within for-profit, nonprofit, public health and government organizations.

Students take six core and breadth courses and then dig into HPM with five specific courses. To complete the 42 units required for the OOMPH degree, students in the HPM concentration select three elective courses of interest. Applications are available for fall and spring starts. To apply and learn more about the online format, please visit the [Online Public Health](#) page.

UNIT REQUIREMENTS

Online MPH students are required to complete a minimum of **42 units of coursework, practicum and a Comprehensive Exam**. On-campus visits are also required for two summers, one week each summer. Students enroll in 2 courses or 6 units per academic semester, including summer.

OOMPH-WIDE MPH REQUIREMENTS (18 UNITS)

PH W142	Introduction to Probability and Statistics in Biology and Public Health
PH W200E	Health Policy & Management Breadth Course
PH W200F	Environmental Health Sciences Breadth Course
PH W200G	Health and Social Behavior Breadth Course
PH W250A	Epidemiologic Methods I
PH W289	Interdisciplinary Seminar

OOMPH HPM PROGRAM REQUIRED COURSES (15 UNITS)

Health Policy: One of the following two courses

PH W220M	Health Policy Methods
PH W222A	Biomedical Innovation Policy

Management and Organization

PH W223	Strategic Management and the Health Sector
PH W224	Organizational Behavior and Management in Health Care

Microeconomics of Health Care: One of the two following courses

PH W226A Health Economics

PH W226C Economics of Population Health

Health Finance

PH W227A Health Care Finance

Sample OOMPH HPM Schedule (fall start)

	Fall	Spring	Summer
First Year	PHW200G HSB Breadth PHW250 Epidemiology	PHW142 Biostatistics PHW200F EHS Breadth	PHW200E HPM Breadth & 1 week on-campus visit PHW220M Health Policy Methods
Second Year	PHW224 Org Behavior & Mgmt PHW226A Health Economics	PHW227A Finance Elective	PHW289 Interdisciplinary Seminar & 1 week on-campus visit PHW223 Strategy
Third Year	Elective Elective Comprehensive Exam		

MBA/MPH

This is a 2.5-year concurrent degree program, offered in a long-standing partnership between the School of Public Health and the Haas School of Business. It has been in existence for more than 35 years, so it has a large community of alumni and provides students access to the top-notch career services and faculty mentors from both Schools.

UNIT REQUIREMENTS

MBA MPH students are required to complete **a minimum of 80 units of coursework** over 5 academic semesters and 2 summers. Of the 80, at least 45 units must be MBA and at least 32 units must be from SPH. The other 3 units can be from MBA, SPH or another campus department (graduate or upper division courses). Some SPH requirements are waived due to overlap with MBA Core Courses.

REQUIRED PUBLIC HEALTH COURSES (11-14 UNITS)

PH 200K	Environmental Health Sciences Breadth Course
PH 200L	Health and Social Behavior Breadth Course
PH 250A	Epidemiologic Methods I
PH 297	Public Health Field Placement (can repeat 2nd summer for credit)
PH290	HPM and Public Health (CEPH, 1 unit online)

REQUIRED HEALTH POLICY AND MANAGEMENT COURSES (11 UNITS)

PH 220	Health Policy Decision-Making (or alternative policy class)
PH223E	Capstone Seminar in Health Policy and Management
<u>Management and Organization: One of the two following courses (CEPH Leadership)</u>	
PH 223C	Strategic Management and the Health Sector
PH 224A	Organizational Behavior and Management in Health Care
<u>One of the following courses:</u>	
PH 226A	Health Economics A (also available as an online course PHW226A)
PH 226C	Economics of Population Health (also available as an online course PHW226C)

REQUIRED MBA CORE – REVIEW [HERE](#).

REQUIRED MBA HEALTH MANAGEMENT CORE COURSES (5 UNITS)

MBA297A	Healthcare in the 21st Century
MBA XXX	Various MBA elective offerings in health management (at least 2 units)

MPP/MPH

The MPP MPH concurrent degree program offered by the School of Public Health and the Goldman School of Public Policy can be completed in **as few as five semesters**, balancing core requirements and elective courses across the two primary Schools as well as other departments on campus. The program provides access to faculty mentoring and career services from both Schools and also offers the opportunity for you to participate in two summer internships.

UNIT REQUIREMENTS

MPP MPH students are required to complete **a minimum of 80 units of coursework** over 5 academic semesters and 2 summers. Some SPH requirements, including Biostatistics and the MPH Comprehensive Exam (Capstone) are waived due to overlap with MPP Core and the GSPP Applied Policy Analysis (APA).

REQUIRED PUBLIC HEALTH COURSES (10-13 UNITS)

- PH 200K Environmental Health Sciences Breadth Course
- PH 200L Health and Social Behavior Breadth Course
- PH 250A Epidemiologic Methods I
- PH 297 Public Health Field Placement (can repeat 2nd summer for credit)

REQUIRED MPP CORE - REVIEW [HERE](#).

REQUIRED HEALTH POLICY AND MANAGEMENT COURSES (11 UNITS)

- PH 220 Health Policy Decision-Making (or alternative policy class)
 - PH 223D Foundations of Health Policy and Management
 - PH W227A Health Care Finance
- Management and Organization: One of the two following courses (CEPH Leadership)
- PH 223C Strategic Management and the Health Sector
 - PH 224A Organizational Behavior and Management in Health Care
- One of the following courses:
- PH 226A Health Economics A (also available as an online course PHW226A)
 - PH 226C Economics of Population Health (also available as an online course PHW226C)

SELECTED ELECTIVES

Below are a sampling of popular electives HPM students take at the School of Public Health, Haas School of Business, Law School, Goldman School of Public Policy and School of Information.



Financing Your Degree

Berkeley Public Health has many resources to help you fund your education and also provides more information on the [Fees and Financial Aid](#) page. Additionally, be sure to take a look at the [Financial Planning Checklist](#).

Tuition and Fees

Tuition, fees, and charges are included on the UC Berkeley's [Office of the Registrar](#)'s website along with more details about [fee definitions](#). To view fee rates, please scroll down to the tab labeled "Graduate: Professional-School of Public Health". If you enroll in the MPH program, you are required to pay professional degree supplemental tuition each semester. The total cost of the degree is based on the length of your program.

Tuition, fees, and charges are subject to change by the Regents of the University of California and could be affected by State funding reductions. Accordingly, they may differ from the amounts shown.

Cost of Attendance Budget

Your cost of attendance budget is the estimated average cost of completing an academic year at UC Berkeley. This estimate includes the cost of tuition and fees, room and board, supplies, transportation, and personal expenses.

Your budget also serves as a limit for the amount of grants, scholarships, fee remission, loans, and other forms of aid that can be offered to you. You may find the graduate student budget on UC Berkeley's [Financial Aid and Scholarships](#) website.

Federal Loans & Work Study

Graduate students may apply for need-based loans and work-study by submitting a [Free Application for Federal Student Aid](#) (FAFSA) and including the UC Berkeley school code (001312). To be eligible for federal student aid, students must hold US citizenship or be a permanent resident. Eligible graduate students are typically offered a combination of [Direct Unsubsidized Loans](#) and [Direct PLUS Loans](#) up to the cost of attendance.

Any questions regarding financial aid offers or programs may be directed to the Financial Aid Office by filing a case [here](#). You may visit the [Financial Aid Office](#) for more information.

Scholarship and Fellowship Opportunities

Each academic year, merit and need-based fellowships and scholarships are awarded to eligible students by both UC Berkeley's Graduate Division and Berkeley Public Health. Incoming students nominated for scholarship and fellowship opportunities are contacted directly via email regarding their

funding offer. Awards are generally given out by nomination only by each program's respective admissions committee. There is no separate application process for these awards beyond completing the fellowships portion of the SOPHAS or UC Berkeley application.

For more information about other available fellowships, scholarships and awards, please refer to the following resources:

[Berkeley Public Health Fellowships, Scholarships and Awards](#)

[Berkeley Financial Aid & Scholarships](#)

[UC Berkeley Graduate Division's Graduate Fellowships and Awards](#)

[Berkeley Financial Aid & Scholarship search](#)

[Association of Schools and Programs of Public Health \(ASPPH\)](#)

[Immigrants Rising](#)

Veteran Students

Our [Cal Veterans Services Center](#) offers information regarding various types of military educational benefits.

Native American Opportunity Plan

UC's Native American Opportunity Plan ensures that in-state systemwide Tuition and Student Services Fees are fully covered for California students who are also enrolled in federally recognized Native American, American Indian, and Alaskan Native tribes. This plan applies to undergraduate and graduate students.

To learn more about the eligibility requirements visit the [Native American Opportunity Plan](#) website.

Undocumented Students

Undocumented students are eligible for Berkeley Public Health and Graduate Division awards, unless otherwise specified. [AB540 eligible students](#) are eligible for California residency for purposes of tuition. Additionally, AB540 eligible students may apply for the [California DREAM Loan Program](#) by submitting their California Dream Act Application by the March 2 deadline and following up with the Financial Aid Office. UC Berkeley's [Undocumented Student Program](#) also provides students with emergency and other grants. You may learn more about their services on their page.

International Students

International students may apply for need-based grants (including grants for students who are parents) administered by the [Berkeley International Office](#). See more information on their page.

Graduate Student Parent Grants

Registered graduate student parents who live with dependent children and demonstrate financial need are eligible for a grant that may be applied toward housing/living expenses, dependent health insurance, child care, and/or tuition. You may visit [Berkeley Graduate Division](#)'s website for more information.

Basic Needs Center

Our [Basic Needs Center](#) provides our students with basic economic, food, and housing. Some of the services provided include a food pantry, CalFresh application workshops, housing support, emergency rental assistance, and other urgent resources.

HPM Application Frequently Asked Questions

Work Experience

How much work experience do I need to be competitive for the HPM MPH program?

This varies by track. The MBA/MPH has a median work experience of 5 years (see the [MBA Class Profile](#)). The HPM 2-year MPH program strongly recommends that applicants have a minimum of 2 years of full-time work experience.

Previous Coursework

Do I need to have taken undergraduate statistics or upper-division math classes?

While evidence of the ability to successfully complete graduate-level studies is indicated by an applicant's scholastic record and appropriateness of academic preparation, we do not have specific prerequisite courses. It is highly recommended, however, that applicants have to take a college level math (e.g., linear algebra or calculus) or a statistics course. A course in microeconomics is also advised. Because MPH students are required to take statistics courses, as well as finance and economics, we look for applicants who have taken and done well in statistics, mathematics, or microeconomics classes in college. This foundation helps ensure that you will not have trouble with the quantitative aspects of your MPH training.

Re-entry applicants are urged to take a review course in a classroom setting before applying to the MPH program in Health Policy & Management.

What kinds of undergraduate majors do you look for in applicants?

The HPM program welcomes a wide range of undergraduate majors and academic backgrounds. It is the program philosophy that a diversity of backgrounds enriches the motivation and abilities of public health professions. Please review the student profiles in the Appendix to get a sense of the backgrounds of the current HPM students.

Matching in Faculty Interests

Do I need to have interests that exactly fit those of a faculty member?

While it is not required for students to have interests that exactly fit those of a faculty member, it may be beneficial for you to seek mentorship from faculty whose interests are more relevant to your academic and career goals. A list of HPM faculty research interests and courses can be found in the Appendix. You might also want to look at the full [BPH faculty roster](#) as many faculty in other concentrations have diverse interests that intersect with HPM.

Our faculty members are leaders in their respective fields and the driving force behind the School's diverse array of centers and programs. Interacting with them will not only enrich existing interests but could also expose you to a plethora of novel opportunities and disciplines. In HPM, we have both research-based, tenure track faculty, as well as professional faculty who come to the program with many years of relevant work experience to complement with advanced degrees (MPH, MBA, MPP, etc).

Statement of Purpose and Personal History Statement

What are you looking for in the Statement of Purpose and Personal History Statement?

Both the Statement of Purpose and the Personal History Statement are required and are an essential part of your application. Your Statement of Purpose should clearly address the following:

- Why do you want an MPH?
- Why do you want to do your graduate studies at this point in your career/academic development?
- Why are you interested in health policy and management, including some discussion of your previous interest or involvement in management and/or policy related activities (note that you do not need to restate your full resume as the HPM Admissions Committee will have that available to review).
- How will the Health Policy and Management MPH degree and the graduate study experiences contribute to your short and long-term career goals?

- Why do you want to pursue these graduate studies at Berkeley Public Health?

In your Personal History Statement, please provide information that you are comfortable sharing on any personal, social, or financial challenges you have experienced that have had an impact on your candidacy as an applicant. This information helps inform our decisions, particularly in regard to fellowship nominations.

Letters of Recommendation

How many letters of recommendation should I submit, and from whom?

Three letters of recommendation are required. Of your three letters, at least one should be from someone who knows your academic potential, (a former professor or someone who can discuss your intellectual abilities) and one from someone who knows your management, policy analysis, or planning potential (such as a current or former employer).

The MBA/MPH concurrent degree program has different criteria for letters of recommendation. Please visit [Haas Admissions](#) for additional information.

Fellowships

How do I apply for fellowships?

Applicants seeking a graduate fellowship or scholarship awarded by the Graduate Division, Berkeley Public Health, or Health Policy and Management must file a completed application for admission by December 1. Qualified applicants are nominated for fellowships by the program based on financial need and/or academic achievement. An upper-division grade-point average (GPA) of at least 3.50 is required to be considered for a merit-based graduate fellowship. Please see the Financing Your Degree for more information.

Appendix A. HPM Faculty Profiles

Program Faculty



Stefano Bertozzi, MD, PhD, Professor of Health Policy and Management

Research Interests

Health economics and policy, focusing on the economic aspects of HIV/AIDS and on the health impact of large social programs.

Courses

- PH 200J HPM Breadth Course
- PH 220E Global Health Policy
- PH 293 DrPH Doctoral Seminar (3rd Year)



Amanda Brewster, PhD, MSc, Assistant Professor School of Public Health

Research Interests

Coordination of health care and social services, inter-organizational relationships, performance improvement, implementation of new practices, organizational culture, social determinants of health.

Courses

- PH 223D Foundations of Health Policy and Management
- PH 224E Healthcare Quality
- PH 237A Theories and Methods in Health Policy and Health Services

Research

- PH 237D Health Policy PhD Dissertation Seminar
- PH 293 Doctoral Seminar



Timothy Brown, PhD, Associate Adjunct Professor, Associate Director of Research, Berkeley Center for Health Technology

Research Interests

Health care labor, high cost biomedical innovation, public health services and systems, social capital and health, markets, oral health.

Courses

- PH W200E Health Policy and Management
- PH 231A Analytic Methods for Health Policy & Management
- PH 237B Health Policy Theory & Methods B



William Dow, PhD, Professor of Health Policy and Management, Kaiser Permanente Endowed Chair

Research Interests

Health economics, global health, economic demography.

Courses

- PH 226C Economics of Public Health
- PH W226C Economics of Population Health
- PHW226F Cost Effectiveness Analysis
- PH 237D Health Policy PhD Dissertation Seminar



Robin Flagg, PhD, MPH, Lecturer in Health Policy and Management

Research Interests

Governor decision-making under the ACA: Expansion of Medicaid and State politics.

Courses

- PH 150D Introduction to Health Policy
- PH 130 Advanced Health Policy
- PH 297 MPH Field Studies



Brent Fulton, PhD, MBA, Adjunct Assistant Professor, Faculty Director, HPM Online MPH Program

Research Interests

Healthcare markets, health insurance, health workforce, accountable care organizations, mental health, California's healthcare market.

Courses

- PH 126 Introduction to Health Economics & Public Policy
- PH W226A Health Economics (online MPH program)



Meghana Gadgil, MD, PhD, Adjunct Assistant Professor

Research Interests

Human-centered design, systems and quality improvement, global health, and climate change adaptation and mitigation in the health sector.

Courses

- PH W200E Health Policy and Management



Jenny S. Guadamuz, PhD, Assistant Professor of Health Policy & Management

Research Interests

Health disparities researcher & pharmacoepidemiologist, who uses an interdisciplinary approach to identify how structural determinants impact the use of healthcare, especially medications among racial/ethnic minorities.



Ann Keller, PhD, Associate Dean of Education, Associate Professor of Health Policy & Management

Research Interests

Digital health technology, underserved patient populations, chronic disease prevention and care management, social determinants of health, electronic health records.

Courses

- PH220 Health Policy Decision Making
- PH 271E Environmental Health Policy
- PH 237B Health Policy PhD Dissertation Seminar
- PH 293.X PhD Dissertation seminar



Kim MacPherson, MBA, MPH, Program Director, Health Policy and Management Master's Program, Co-Director, Berkeley Center for Health Technology, Executive Director, Health Management, Haas School Business

Research Interests

Intersection of reimbursement/coverage and biomedical technology, digital health, market analysis, strategic management and business planning.

Courses

- PH 223C Health Care Strategy
- PH W227A Health Care Finance
- PH 297 MBA/MPH Field Studies
- MBA 296.11 Unlocking Digital Health Innovation
- MBA 297D Trends in Biotech & Pharma
- MBA 297A Healthcare in the 21st Century



Ziad Obermeyer, MD, Acting Associate Professor of Health Policy and Management

Research Interests

Intersection of machine learning and health, decision making in public policy and clinical medicine

Courses

- PH 196 AI for Medicine and Health Policy
- PH 237D Health Policy PhD Seminar



Becky Staiger, PhD, Assistant Professor of Health Policy & Management

Research Interests

Combines approaches from health economics, health policy, and health services research to better understand how vulnerable patients access and experience healthcare, particularly through their relationship with providers.



James Robinson, PhD, Leonard D. Schaeffer Professor of Health Economics, Head, Division of Health Policy and Management, Director, Berkeley Center for Health Technology

Research Interests

Biotechnology policy and strategy, cardiac and orthopedic medical devices, health insurance coverage and design, payment methods for providers and technologies, consumer-driven health care.

Courses

- PH 226A Health Economics
- PH 222A Health Care Technology Policy



Hector Rodriguez, PhD, MPH, Henry J. Kaiser Endowed Chair in Organized Health Systems, Professor of Health Policy and Management, Chair, Graduate Group in Health Policy, Faculty Director, California Program on Access to Care, Co-Director, Center for Healthcare Organizational and Innovation Research (CHOIR)

Research Interests

Organizational influences on medical care quality and public health system effectiveness, performance measurement, and patients' experiences of ambulatory care.

Courses

- PH 224A Organizational Behavior & Management in Health Care
- PH 224D Organizational Analysis of the Health Care Sector
- PH W224 Organizational Behavior & Management in Health Care (online MPH program)
- PH 290.X Dissertation Seminar (HP PhD program)

Emeriti Faculty



Joan Bloom, PhD, Professor Emerita, Investigator, Center for Healthcare Organizational and Innovation Research (CHOIR)

Research Interests

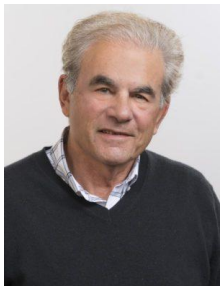
Organizational innovation and change, effectiveness of Federally Qualified Community Clinics, disparities in health care and outcomes among under-represented populations, including immigrants with limited education and English; quality of life of cancer survivors.



Thomas Rundall, PhD, PhD, Henry J. Kaiser Professor Emeritus, Investigator, Center for Healthcare Organizational and Innovation Research (CHOIR) and Co-Director, Center for Lean Engagement and Research (CLEAR) in Health Care

Research Interests

Application of organizational theory to health care, physician practice organizations, hospital restructuring and applications of Lean in health care.



Richard Scheffler, PhD, Distinguished Professor of Health Economics and Public Policy; Director, Petris Center on Healthcare Markets and Consumer Welfare, and Global Center for Health Economics and Policy Research

Research Interests

Organization and financing of mental health services, incentives and mergers in managed care, reforming health systems in Eastern Europe.



Stephen Shortell, PhD, MBA, MPH, Blue Cross of California Distinguished Professor Emeritus and Dean Emeritus, Professor of the Graduate School, Co-Director, Center for Healthcare Organizational and Innovation Research (CHOIR), and Co-Director, Center for Lean Engagement and Research (CLEAR) in health care

Research Interests

Organizational correlates of quality and outcomes of care, evaluation of continuous quality improvement approaches and community-based health improvement initiatives, strategic change in the health care sector, e.g., evolution of integrated delivery systems, strategic alliances between physicians and other health care entities, diffusion of healthcare innovations and application of Lean to health care organizations.

Professional Lecturers

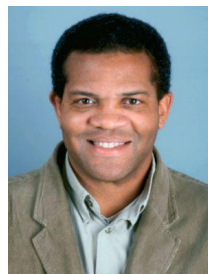


Sheila Baxter, MPH

- Business Operations and Strategic Support Leader, Kaiser Permanente

Course

- PHW 223 Strategic Management and the Health Sector



Anthony Iton, MD, JD, MPH

- Senior Vice President, Healthy Communities, The California Endowment
- Director and County Health Officer, Alameda County Public Health Department, 2003-2009

Course

- PH 220D Health Policy Advocacy

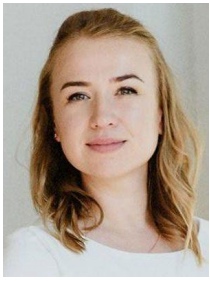


Anna Johnson, MPP

- Policy Director, California Competes

Course

- PH 220D Health Policy Advocacy



Irina Titova, MPP, MPH

- OOMPH Instructional Team Member and Program Manager

Courses

- PHW 220M Health Policy Methods
- PHW 227A Healthcare Finance
- PHW 223 Strategic Management and the Health Sector



Kip Webb, MD, MPH

- Academic Pediatrician at Stanford
- Managing Director, Provider Healthcare Practice Lead, and Chief Clinical Innovation Officer at Accenture

Courses

- PH 223E Master's Capstone in HPM
- PH 290 Doctorate Course in Leadership

Appendix B. Recent MPH Student Profiles

- Prior Education
- Employment History
- Why UC Berkeley?
- Professional Interests
- Personal Interests

MPH 1-Year Student

- ★ Fourth-year medical student
- ★ Research Assistant - Loma Linda University; Long-term substitute teacher - Moreno Valley Unified School District (MVUSD); Grant Facilitator - MVUSD and Moreno Valley College Upward Bound Math and Science
- ★ I have a passion for learning and a deep desire to grow my knowledge about how to address deficits in healthcare that impact the underserved, people of color, minorities, and vulnerable populations in the US. When asked what school embodies public health, as it relates to simultaneously enhancing diversity and addressing systemic problems in all systems and institutes throughout the state and country, Cal always came to mind. This thought inspired my desire to pursue my graduate work at Cal
- ★ Publish two articles as a first or second author by the end of 2024; Take part or organize a global health initiative in Latin America to screen for and correct progressive diabetic retinopathy, cataracts, and glaucoma; Ophthalmologist; Director or department chair of Education, Diversity, and Inclusion at an institution; Professor of medicine
- ★ Run one marathon this year; read 12 books by the end of the academic year; visit Europe

MPH 1-Year Student

- ★ Harvard/2017; UCSF School of Medicine/Projected 2023
- ★ Harvard TH Chan SPH, WHO
- ★ Thriving, diverse community of teachers and scholars
- ★ Health disparities, ultrasound, OB ED care
- ★ Hiking, travel, learning languages

MPH 1-Year Student

- ★ 7 Year Accelerated BS/MD Rutgers New Jersey Medical School Class of 2020
- ★ Resident Physician KPSF/UCSF Dual Residency Program in Internal Medicine and Preventative Medicine, June 2020 - present
- ★ I choose to apply to this KPSF/UCSF dual residency in Internal Medicine and Preventative Medicine for the phenomenal opportunity for a fully-funded 11-mo MPH at UC Berkeley School of Public Health. UC Berkeley SPH is well known for its progressive campus culture and is home to a dynamic intersection of policy, tech, and social leaders in the field of public health.

I get to continue my clinical training in both inpatient and outpatient internal medicine while also getting a protected year to immerse myself in the amazing environment of UC Berkeley and the Bay Area.

- ★ General Internal medicine, primary care and preventive health; Access to healthcare in vulnerable populations; Healthcare policy and health systems improvement
- ★ Traveling; spending time outdoors; on the water; and in the mountains; South Asian art & dance

MPH 1-Year Student

- ★ MD, 2020
- ★ Kaiser Permanente San Francisco Resident Physician
- ★ Interested in health tech, medical devices, & digital health
- ★ Entrepreneurship, venture capital
- ★ Personal electric vehicles, guitar, cooking

MPH 2-Year Student

- ★ B.A. in Molecular and Cellular Biology, UC Berkeley, graduated 2022
- ★ Environmental consultant at Stantec ChemRisk working on asbestos litigation, ESG advising, researcher at UCSF looking into a vaccine platform for gonorrhea, lab manager for biotech startups at LabFellows
- ★ The personal relationships I built with SPH faculty as an undergrad at Cal provided ample evidence of goal alignment and to true dedication to fostering the wellness of others. I am honored to be continuing my education here
- ★ hospital administration, healthcare consulting, reproductive health running, visiting museums, paint by numbers

MPH 2-Year Student

- ★ UNC Chapel Hill Class of 2019
- ★ Provide strategic corporate and financial communications counsel to up to 12 clients at a time, with market caps of up to \$12B and across therapeutic and diagnostic areas, through important milestones such as IPO, merger, or major data; Consider industry trends and company merits to develop impactful strategies that build loyal shareholder bases, enhance equity market value, and strengthen corporate brand and reputation overall; Interface directly with C-suite, building rapport and serving as main point of contact between agency and client
- ★ The people that Berkeley attracts, attracts me
- ★ Biotechnology, equity, LGBTQ+ health, business behind healthcare
- ★ Cooking, Star Wars, the East Coast

MPH 2-Year Student

- ★ B.S in Radiation Therapy from Howard University, 2019
- ★ I've worked as a Radiation Therapist at Sutter Eden Hospital for 2 years. I also work part time at Stanford Hospital as a Radiation Therapist.

- ★ I am drawn to UC Berkeley's academic excellence because I know that I will gain outstanding knowledge and practice to make a meaningful difference in society. I also love the fact that I will be learning from preeminent faculty who share similar interests such as: healthcare disparities and access and effectiveness of care to minority and underserved populations. Furthermore, I admire the professional development curriculum strategies; having case-based and service-based learning experiences, networking opportunities, and career management services all ensure proper readiness for your future career.
- ★ Health equity for underserved populations, health disparities, improving access to quality care
- ★ Traveling, hanging out with friends, trying out new restaurants/bars, and CrossFit

MPH 2-Year Student

- ★ I got my Bachelor's of Science in Biology from Stony Brook University in New York in 2019
- ★ Aide and Med Tech at Woodhaven Center of Care (2017-2019) and Med Tech and Supervisor at Atria Senior Living (2020-2022)
- ★ I love Northern California and Berkeley is a great school
- ★ Healthcare Administration, Public Health Consulting, Leadership Role within Local Public Health Community, Political Coordinator
- ★ Hiking, Music of all kinds, Video games (especially Pokémon), Movies

MPH 2-Year Student

- ★ BS in Anthropology (Baylor University) 2022
- ★ N/A
- ★ Healthcare equity is the core of what I seek to accomplish in my professional career. In a sector increasingly reliant on technology and digitization of care, I believe it is more important than ever to build equitable digital infrastructure from the ground up. I am confident that through its faculty, network, and location, Berkeley Public Health will aid me in developing skills in policy and management work that I need to approach healthcare in a better informed and effective manner.
- ★ Healthcare delivery innovation, digital health technology, chronic disease prevention and care management
- ★ Hiking/backpacking, rock climbing, live music, and food

MPH 2-Year Student

- ★ B.A. in Political Science at UCLA, Class of 2019
- ★ Care Coordinator, Midi Health, July 2022 - Present; Fellowship Coordinator, Stanford School of Medicine, January 2020 - June 2022
- ★ I chose Berkeley for its program size and mentorship opportunities
- ★ Immigrant Health; Social Determinants of Health; Law and Policy
- ★ Live Music, movies, yoga, traveling

MPH 2-Year Student

- ★ BA, Claremont Mckenna, 2019, Science & Management

- ★ I have 4 years of experience in the biopharmaceutical industry including roles in finance, business development and commercial strategy. My most recent role was in U.S. Value and Access at Amgen.
- ★ I chose Berkeley for its integrated health management and policy curriculum, tight knit community and proximity to healthcare ecosystems in the bay area. I look forward to studying the healthcare sector through a public health lens to work toward improving health outcomes, equity and affordability.
- ★ Preventative Health, Health Equity, Cost Effectiveness, Healthcare Reform
- ★ Hiking, Volleyball (grass, beach or indoor), Yoga, Spikeball, Reading

MPH 2-Year Student

- ★ English BA 2019
- ★ Behavioral technician for Esperanza therapy services, programs specialist for Alliance in Aging
- ★ Location is close to family, top MPH programs, and the fellowship offer
- ★ Public health advisor, epidemiology, program director in county,state, or federal level
- ★ Camping/hiking, learning languages, roller skating

MPH 2-Year Student

- ★ B.S Public Health 2018
- ★ Heath Fellow at Americorps; Quality Assurance Specialist at El Centro De Amistad
- ★ I chose UC Berkeley because of their commitment to diversity and inclusivity aligns with my values.
- ★ Improving health outcomes, health equity, health technology
- ★ Legos, plant enthusiast, video games, hiking

MPH 2-Year Student

- ★ B.A. Tufts University 2018
- ★ Community health worker at federally qualified community health center; public health consulting (projects include workforce well-being, COVID-19 disparities, community health needs assessments, national health center data reporting)
- ★ Supportive and progressive environment; transitioning back to the west coast from the greater Boston area
- ★ Health equity; health systems transformation and integrated care; collaborations/partnerships with community organizations and members
- ★ Climbing; photography; crafts; baking

MPH 2-Year Student

- ★ UC Merced B.A in Public Health/ 2020
- ★ Clinical Laboratory Associate/ Color Health; COVID-19 Vaccine Coordinator in Tulare County/ Color Health; Clinical Laboratory Associate/Color Health; COVID-19 Vaccine Coordinator in Tulare County/Color Health
- ★ I chose Berkeley because of its faculty and professional opportunities.
- ★ Improve patient outcomes in rural health clinics; provide effective and affordable medication; supply rural low-income communities with medical specialists.

- ★ Playing my guitar, sketching, dancing

MPH 2-Year Student

- ★ B.A Political Science, UC Santa Barbara, 2020
- ★ Contact Tracer and Investigator, Lifelong Medical, Oakland, CA January 2021 – Present; Intern, Monterey County Health Department, Salinas, CA June 2020 – December 2020; Facilitate the implementation of the Health Department Strategic Plan during COVID-19; Intern, UCSF Benioff Children’s Hospital, CHAMPS Program, Oakland, CA June 2019 - August 2019;
- ★ Because of the schools connection to the community and resources to help students succeed
- ★ Hospital Administration; Health Care Administration; Health Consulting; Health Insurance Professional
- ★ Music, Hiking, Painting/Drawing, Traveling

MPH 2-Year Student

- ★ B.A. Chemistry and B.A. Latina/Latina Studies @ SF State 2016
- ★ San Francisco Health Plan
- ★ To help develop projects to address social issues in health care
- ★ Street Medicine, Program Implementation, Mobile Clinics
- ★ Guitar and Saxophone player; Mountain Biking

MPH 2-Year Student

- ★ BA, 2010
- ★ Outdoor Educator, Substitute Teacher, Nonprofit Education Program Director, Emergency Medical Technician, Paramedic, EMT/Paramedic Program Instructor
- ★ Access to academic resources, strong professional network, location, recommendations from colleagues
- ★ Prehospital Emergency Medicine, Client-centered Care, Community Health Improvement, Community Paramedicine, Social Determinants of Health, Workplace Culture
- ★ Surfing, playing music, spending time with family and friends, building things, fishing

MPH 2-Year Student

- ★ BS Public Health, Minor in Complementary & Alternative Health Practices, San Jose State University 2019
- ★ Lead Patient Care Coordinator & Virtual Care Navigator @ Crossover Health; Lead Student Liaison @ SJSU Student Health & Wellness Center; Health Education & Complementary and Alternative Health Intern @ Kaiser Permanente San Jose
- ★ I chose UC Berkeley because of the renowned academic prestige, small & tight-knit cohort, network of distinguished faculty, and proximity to the technological & innovative healthcare space in the Bay Area.
- ★ Health Care Innovation; Digital Health Technology & Intervention; Access to dependable, equitable, & inclusive health care; Organizational healthcare performance

- ★ Live music & music festivals; Traveling, good food, & new experiences; Computer/board/card games with friends; The Marvel Cinematic Universe

MPH 2-Year Student

- ★ Bachelor of Science in Neurobiology, Physiology, and Behavior with a minor in Managerial Economics at University of California, Davis
- ★ Clinical research coordinator and lead finance analyst at UC Davis Medical Center; operations lead at Mishe (start-up company aiming at promoting price transparency)
- ★ Location is close to the biotech hub in San Francisco, renowned faculty members, vast resources to support graduate students
- ★ Biotech/pharmaceutical industry, healthcare insurance, policy innovation, health equity
- ★ Food, movies, music

MPH 2-Year Student

- ★ UCLA, BS in Psychobiology, 2018
- ★ During my time at UCLA, I worked as a research assistant and aided in several projects aimed at understanding how cultural factors and family environments influence depression and anxiety in Latinos and rural populations. After graduating I worked as a practice manager and intake coordinator at a private mental health clinic, connecting patients to mental health services and leading community education/outreach.
- ★ I was drawn to the faculty and their research. The faculty members are incredibly approachable and I feel that this is the best environment for me to grow and develop the skills I need to make an impact in the public health field.
- ★ I am interested in improving healthcare quality and access, addressing healthcare disparities in underserved communities, and exploring how social determinants of health act as barriers within healthcare delivery models.
- ★ Coffee brewing, going on long bike rides, and picnics with friends.

MPH 2-Year Student

- ★ UCLA Environmental Science B.S. - Graduated 2021
- ★ LA County DMH - COVID-19 Comm. Ed. Ambassador: hybrid work presenting to marginalized communities in English/Spanish on minimizing exposure to COVID-19 & mental health/wellbeing.
LAC+USC Wellness Center - Wellness Navigator Intern: Facilitated patients take control of their own health and wellbeing through culturally sensitive prevention services to address root causes disease improving health outcomes.
- ★ UC Berkeley was my dream graduate program as it's ranked 8th in the country for Public Health and in terms of research opportunities. I know I would have plenty at CAL. Also, being a Los Angeles native and going to UCLA I have been in Los Angeles my entire life so this was an opportunity to explore and start a new chapter in my life. I know the bay is a hub for new public health policy and activity so the best place naturally to take my academic and professional journey if given the opportunity is here in the bay. I am very excited to start at

CAL and look forward to continue my professional, academic, and personal growth.

- ★ Health inclusivity & Access, Medical Education Pipeline, Chronic illness Intervention, and Health Care Administration
- ★ Reptiles & Amphibians, Technology/Computers, Video Games, and Music Composition/Production

MPH 2-Year Student

- ★ I earned my B.S. in Political Science and History at Santa Clara University in 2015.
- ★ I worked at the County of San Mateo's Human Services Agency as a Medi-Cal and CalFresh case worker. I also worked as a Developmental Disabilities Case Manager for a non-profit organization, La Familia.
- ★ I decided to attend UC Berkeley due to its location, cohort size, vast array of opportunities, and accessible faculty.
- ★ I am interested in access to care, health equity, health systems, and medicaid policy.
- ★ I am personally interested in cooking, hiking, photography, and traveling.

MPH 2-Year Student

- ★ B.A. English and Economics from UC Berkeley, Class of 2019
- ★ Senior Consultant at Guidehouse, Healthcare Strategy (August 2019 - June 2021) - Consulted for a variety of clients projects included state admin of a school-based Medicaid program, assessing a 1,000+ physician medical group for service and site rationalization opportunities, and project management for a provider-led health plan's payer enablement services
- ★ I chose UC Berkeley for my MPH because of its strong presence in the Bay Area, interdisciplinary approach across policy, economics, and management, and diverse community of leaders and peers.
- ★ Medicare and Medicaid policy, healthcare economics, Clinical integration and coordination of care, Social determinants of health and health equity across marginalized populations
- ★ Reading/writing poetry, Ocean/water-related things (swimming, snorkeling, aquariums, etc.), Anything and everything Disney (especially Disneyland)

MPH 2-Year Student

- ★ 2017
- ★ I have been a consultant at Deloitte Consulting for four years, working with clients across the healthcare industry including providers, insurers, and state departments of health services.
- ★ I chose Berkeley due to the school's commitment to addressing social justice and health equity issues, BPH's strong relationships with top health organizations in the Bay Area, the flexibility to take classes across all graduate programs, and the level of faculty engagement with students.
- ★ I am interested in care management, the role of technology in health care, health education, and reducing barriers to care access.
- ★ In my free time, I like to go hiking and biking, bake or cook new recipes, read, and watch movies.

MPH 2-Year Student

- ★ University of California, Berkeley, Political Science, 2019
- ★ Marsh & McLennan Agency, Compliance Associate (Employee Health Benefits Division)
- ★ I chose Berkeley because of its program and strong commitment to inclusivity. I also did my undergraduate degree at UC Berkeley, I loved the campus culture, and I want to be a part of that again.
- ★ Health care payment reform, improving care outcomes, health insurance
- ★ Reading, hiking, and being outdoors

MPH 2-Year Student

- ★ BA in Public Health Policy, Class of 2020
- ★ UCI Student Center & Event Services, Building Lead Manager (2017-2019), UCI Contact Tracing & Vaccine Navigation Services, Community Education Specialist (2020-2021)
- ★ I chose to do my graduate studies at Berkeley for its excellent faculty, staff, and resources that will guide me to the right career direction after graduate school. The School of Public Health is a world-class program that will provide me with robust knowledge to become an effective leader in a major health care organization.
- ★ Public Health Consultant, Health Administration, Deputy Public Health Officer
- ★ Working out, Watching the sunset, Traveling

MPH 2-Year Student

- ★ BA in Neuroscience from Columbia University/2016
- ★ 2016-2021 IQVIA (f.k.a. IMS Consulting Group): worked as a life sciences consultant for pharma/biotech companies (primarily those located on the West Coast). Areas of focus included commercial forecasting and portfolio strategy, digital health, and US market access.
- ★ I chose to pursue my MPH at Berkeley because of the small HPM cohort size, impressive faculty and current students I spoke to, location in the Bay Area, and the program affordability.
- ★ Access to care/affordability, Health equity, Health technology, Medicare/Medicaid policy
- ★ Pretty much anything outdoors (especially running and hiking), Baking (or attempting to), Photography

MPH 2-Year Student

- ★ BS, University of Illinois at Urbana-Champaign, Community Health, 2018
- ★ For almost three years, I worked as a Patient Care Program Associate at the Gordon and Betty Moore Foundation in Palo Alto, CA where I managed a portfolio of grants in support of nurse leaders and innovators as well as serious illness care.
- ★ I chose to pursue my graduate studies at UC Berkeley due to the School of Public Health's focus on health equity, as well as professor accessibility due to HPM's small cohort size, client-based learning experiences, and the Bay Area location.
- ★ Health equity, digital health, human-centered design thinking, & maternal health.

- ★ Playing tennis, hiking, biking, singing, playing board games with my family, & spending time with my 16th month old niece!

MPH 2-Year Student

- ★ UC Berkeley 2019
- ★ Medi-Cal Strategy and Operations Intern, Kaiser Permanente NCAL Business Office; Clinical Consultant, CloudMed (formerly Triage Consulting Group)
- ★ With an aspiration to pursue a career in Internal Strategic Management, UC Berkeley's MPH will help me advance innovative and equitable solutions to complex issues impacting minority health outcomes system wide. I value UC Berkeley for its strong vision in social justice and focus on health care research and innovations.
- ★ Data Analytics (SQL), Healthcare Performance Improvement, Health Tech, Strategic Design Thinking for Healthcare Equity
- ★ Hiking, Reading (Favorite Genre: Historical Fiction), Traveling (Bucket List: Backpack across South East Asia), Stand-Up Comedy

MPH 2-Year Student

- ★ BS, University of California, Davis, Biochemistry and Molecular Biology, 2015
- ★ For the past six years, I've worked at a digital health start up focusing on project management, quality control, and data management.
- ★ I chose UC Berkeley because I wanted to join other like-minded students passionate about healthcare and who have a diverse range of experiences across mutual functions and sectors of healthcare.
- ★ Quality improvement, digital health innovation and implementation, healthcare access, maternal health outcomes
- ★ Theater, reading, podcasts, watching baseball/basketball

MPH 2-Year Student

- ★ BA in Biology, 2014, Vassar College
- ★ My most recent position was Program Manager for the UCSF Bioethics Program, where I led administrative activities and worked on research projects related to the social and ethical implications of emerging genomic technologies in clinical and public health contexts. Before that, I worked as a researcher at UCB where I helped image genetic networks in living embryos.
- ★ I chose Berkeley for the interdisciplinary nature of the program and the breadth of opportunities, academic and professional, offered at Berkeley and in the Bay Area.
- ★ Public trust and governance of biomedical data collection and reuse, Precision medicine/health equity, Learning health systems
- ★ Reading speculative fiction, Bike rides, Tacos and dim sum

MPH 2-Year Student

- ★ 2017-2019: Program Associate at Orbis International, global health nonprofit, coordinating volunteer medical staff deployed on international programs. 2019-2021: Strategic Projects Coordinator at New York City Department of Health, working on quality improvement initiatives for independent primary care practices and citywide COVID-10 emergency response.
- ★ I chose Cal for the quality of its public health faculty and the size/composition of the HPM cohort. I'm very excited to be a part of a small, diverse group of professionals passionate about public health!
- ★ Global humanitarian health, federal health policy, data analysis
- ★ Baking desserts, snow sports like skiing and snowboarding, drinking overpriced coffee

MPH 2-Year Student

- ★ University of Southern California, B.S. Public Policy, 2016
- ★ Healthcare analytics at Google - helping payers and providers find business and technology opportunities based on industry trends; Healthcare consulting at Triage Consulting Group - helping providers to recover revenue and strengthen relationships with payers.
- ★ Small cohort size and dedicated support from faculty; the strong vision of social justice and equity
- ★ Community-based healthcare, health equity, clinic management
- ★ Spending time outside, podcasts, reading, road trips

MPH 2-Year Student

- ★ UCLA, 2021
- ★ Health Career Connections Intern; COVID-19 Health Equity and Awareness student program manager
- ★ I want to learn more about health equity and its interaction with health policies that exist and how that can change over time. I also really admire the teaching staff at Berkeley and know they will be great mentors throughout my time here.
- ★ Health equity, health coverage, social determinants of health, healthcare management
- ★ Hiking, cooking, finding new coffee spots, lacrosse

Appendix C. Selected Practicum Placement Sites

Track	Internship Site
<i>2 Year MPH</i>	Asian Health Services
<i>2 Year MPH</i>	Blue Shield of CA
<i>2 Year MPH</i>	CA Health Benefits Review Program
<i>2 Year MPH</i>	Castlight Health
<i>2 Year MPH</i>	CMS - CMMI
<i>2 Year MPH</i>	ConnectWell
<i>2 Year MPH</i>	Contra Costa Health Services - Emergency Preparedness
<i>2 Year MPH</i>	Contra Costa Regional Medical Center
<i>2 Year MPH</i>	Covered California
<i>2 Year MPH</i>	First 5, Alameda
<i>2 Year MPH</i>	Genentech - Access Solutions
<i>2 Year MPH</i>	Genentech - Pricing, Contracts, Distribution
<i>2 Year MPH</i>	Genentech - Channel Operations
<i>2 Year MPH</i>	Ginger
<i>2 Year MPH</i>	Kaiser Permanente - Care Management Institute
<i>2 Year MPH</i>	Kaiser Permanente - Community Benefit
<i>2 Year MPH</i>	Kaiser Permanente - Complex Needs
<i>2 Year MPH</i>	Kaiser Permanente - Health Innovation
<i>2 Year MPH</i>	Kaiser Permanente - Internal Consulting
<i>2 Year MPH</i>	Manatt
<i>2 Year MPH</i>	National Center for Youth Law
<i>2 Year MPH</i>	National Institute for Public Health, Mexico
<i>2 Year MPH</i>	OnLok
<i>2 Year MPH</i>	Pacific Business Group on Health - Health Planning
<i>2 Year MPH</i>	Peerwell
<i>2 Year MPH</i>	Roche Diagnostics
<i>2 Year MPH</i>	San Francisco Department of Public Health

<i>2 Year MPH</i>	SMI
<i>2 Year MPH</i>	UCSF
<i>2 Year MPH</i>	USAID – Washington DC
<i>2 Year MPH</i>	Willis Tower Watson
<i>2 Year MPH</i>	Zuckerberg San Francisco General
<i>MBA/MPH</i>	Abbott Diabetes
<i>MBA/MPH</i>	Aledade
<i>MBA/MPH</i>	Analysis Group
<i>MBA/MPH</i>	Augmedix
<i>MBA/MPH</i>	Bay Labs
<i>MBA/MPH</i>	BCG
<i>MBA/MPH</i>	Becton Dickinson Biosciences
<i>MBA/MPH</i>	BioDuro
<i>MBA/MPH</i>	Biomarin
<i>MBA/MPH</i>	Byte Foods
<i>MBA/MPH</i>	CA Healthcare Foundation
<i>MBA/MPH</i>	Cabinet Health
<i>MBA/MPH</i>	Centene Corporate Headquarters
<i>MBA/MPH</i>	Chartis Group
<i>MBA/MPH</i>	City of Oakland
<i>MBA/MPH</i>	Claritas Rx
<i>MBA/MPH</i>	DaVita
<i>MBA/MPH</i>	Dayton Children’s Hospital
<i>MBA/MPH</i>	Deloitte
<i>MBA/MPH</i>	Doximity
<i>MBA/MPH</i>	Draper Richards Kaplan
<i>MBA/MPH</i>	Evidation
<i>MBA/MPH</i>	Ferrum Health
<i>MBA/MPH</i>	Foundation Medicine
<i>MBA/MPH</i>	Gates Ventures
<i>MBA/MPH</i>	Genentech - Finance

<i>MBA/MPH</i>	Genentech - Global
<i>MBA/MPH</i>	Genentech - PPP
<i>MBA/MPH</i>	Genentech - Rare Disease Marketing
<i>MBA/MPH</i>	Genentech - Access Solutions
<i>MBA/MPH</i>	Genentech - Managed Care Marketing
<i>MBA/MPH</i>	Gilead Sciences
<i>MBA/MPH</i>	Global Blood Therapeutics
<i>MBA/MPH</i>	Gobee Group
<i>MBA/MPH</i>	HealthNet
<i>MBA/MPH</i>	HopeLabs
<i>MBA/MPH</i>	Intermountain Health (Utah)
<i>MBA/MPH</i>	Intuitive Surgical
<i>MBA/MPH</i>	Iris Vision
<i>MBA/MPH</i>	J & J - HealthTech Team
<i>MBA/MPH</i>	J & J - Janssen Pharmaceuticals
<i>MBA/MPH</i>	Jacaranda Health (Kenya)
<i>MBA/MPH</i>	Kaiser - QOS (Internal Consulting for TPMG)
<i>MBA/MPH</i>	Kaiser Permanente - Medical Center Admin
<i>MBA/MPH</i>	Kaiser Permanente - Medicare Strategy
<i>MBA/MPH</i>	Kaiser Permanente - Performance Excellence
<i>MBA/MPH</i>	Kaiser Permanente - Portfolio Management (IT)
<i>MBA/MPH</i>	Kaiser Permanente - Quality and Equitable Care
<i>MBA/MPH</i>	Kurbo
<i>MBA/MPH</i>	Lyft Health
<i>MBA/MPH</i>	Lyra Health
<i>MBA/MPH</i>	Mayo Clinic
<i>MBA/MPH</i>	McKinsey
<i>MBA/MPH</i>	Nexleaf Analytics
<i>MBA/MPH</i>	Norwegian Refugee Council
<i>MBA/MPH</i>	OCA Ventures (VC)
<i>MBA/MPH</i>	Omada Health

<i>MBA/MPH</i>	OneFifteen (Verily NewCo)
<i>MBA/MPH</i>	Proteus Digital Health
<i>MBA/MPH</i>	Savida Health
<i>MBA/MPH</i>	Seattle Genetics
<i>MBA/MPH</i>	Skoll Foundation
<i>MBA/MPH</i>	Solv Health
<i>MBA/MPH</i>	Strategy&
<i>MBA/MPH</i>	Stryker Neurovascular
<i>MBA/MPH</i>	Sutter Health - CPMC
<i>MBA/MPH</i>	The Permanente Medical Group - QOS
<i>MBA/MPH</i>	Twentyeight Health
<i>MBA/MPH</i>	Uber Health
<i>MBA/MPH</i>	Unite Us
<i>MBA/MPH</i>	Varian Medical Systems
<i>MBA/MPH</i>	Verily
<i>MBA/MPH</i>	Vida Health
<i>MBA/MPH</i>	Welbe Health
<i>MPP/MPH</i>	Accenture
<i>MPP/MPH</i>	CA Health & Human Services
<i>MPP/MPH</i>	Cal Latinas for Reproductive Health
<i>MPP/MPH</i>	Clorox Health Division
<i>MPP/MPH</i>	Health Fidelity